

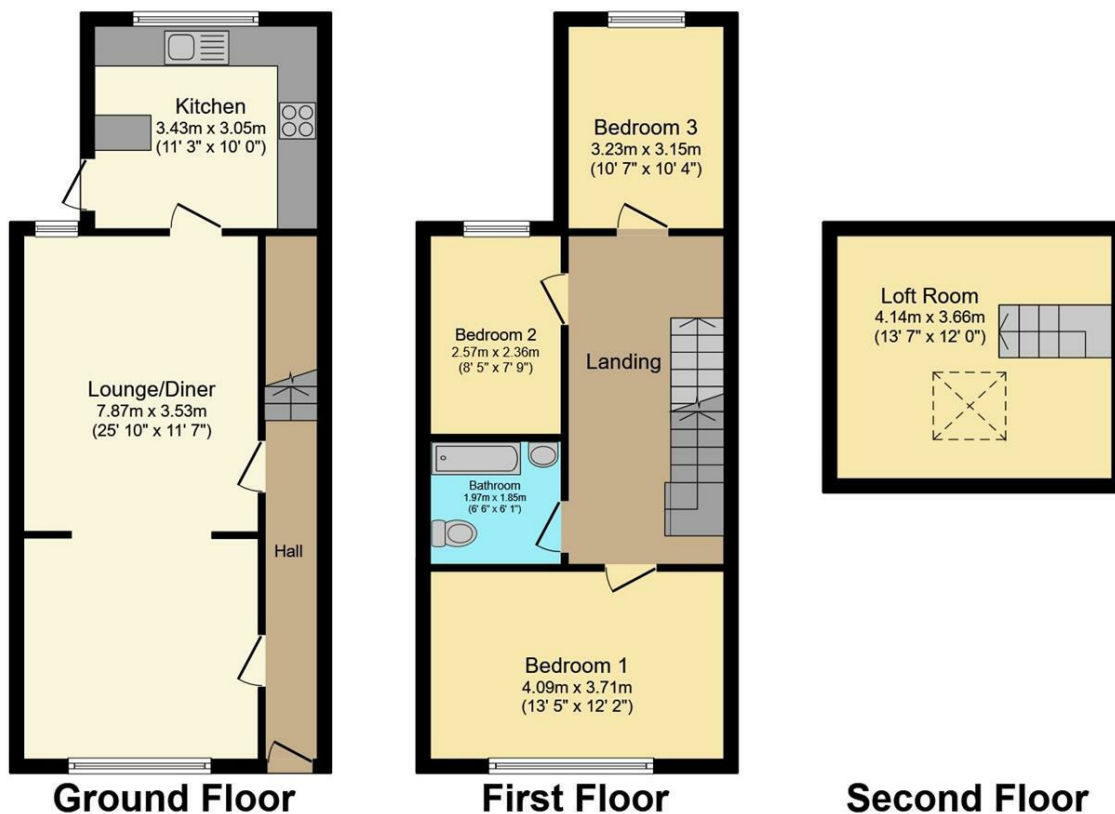


Ebberts Road, Apsley, HP3

Clements Estate Agents are delighted to offer this superb THREE / FOUR bedroom Mid Terrace property offering a good range of features including spacious room sizes, good decorative order, converted loft room, gardens and a sought after Apsley location ideally situated for good local shops, amenities and transport links including Apsley mainline railway station. Available NOW. Call to view!

- Semi-detached Property
- Three / Four Bedrooms
- Good Decorative Order
- Spacious Room Sizes
- Very Popular Location
- Available Now
- Viewing Essential
- Call Now
- Close to the Station
- Unfurnished

£1,700 PCM



Total floor area 102.7 sq.m. (1,105 sq.ft.) approx

This plan is for illustration purposes only and may not be representative of the property. Plan not to scale. Powered by PropertyBox

